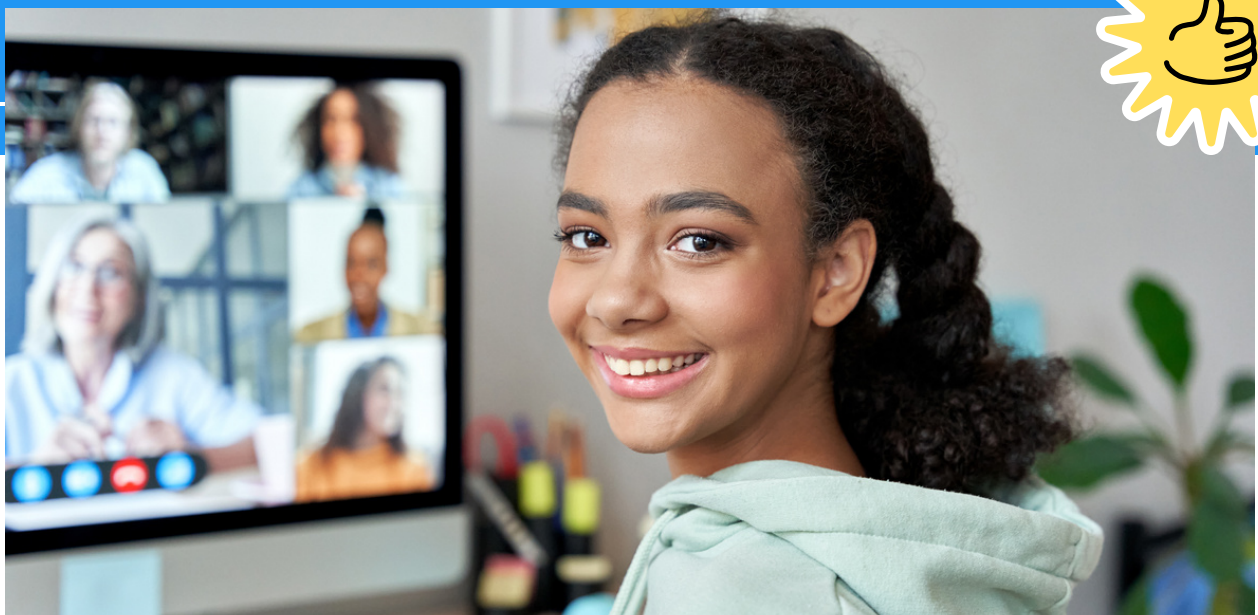


COORDINATING CONJUNCTION



What is a coordinating conjunction? In English grammar, it is a type of conjunction that connects words, phrases, or clauses of equal importance in a sentence. It is a critical component of sentence structure, as it enables the writer to join elements of equal weight to create more concise and coherent sentences.

[Read More](#)



1. Which of the following is a coordinating conjunction?

- a. because
- b. although
- c. and
- d. while

2. Which of the following is not a type of coordinating conjunction?

- a. and
- b. for
- c. but
- d. which

3. Which of the following is an example of a cumulative conjunction?

- a. but
- b. or
- c. and
- d. yet

4. Which coordinating conjunction is used to connect clauses that show contrast?

- a. and
- b. but
- c. or
- d. yet

5. Which coordinating conjunction is used to show a choice between two or more options?

- a. and
- b. but
- c. or
- d. yet

6. Which coordinating conjunction is used to connect clauses that show similarity or addition?

- a. and
- b. but
- c. or
- d. yet

7. Which coordinating conjunction is used to connect two clauses where one is a result of the other?

- a. and
- b. but
- c. or
- d. so

8. Which coordinating conjunction is used to connect two clauses that are opposite or contradictory?

- a. and
- b. but
- c. or
- d. nor

9. Which coordinating conjunction is used to show a cause-and-effect relationship between two clauses?

- a. and
- b. but
- c. or
- d. so

10. Which coordinating conjunction is used to connect clauses that express a condition?

- a. and
- b. but
- c. or
- d. if

Answers

1. C

2. D

3. C

4. B

5. C

6. A

7. D

8. B

9. D

10. D